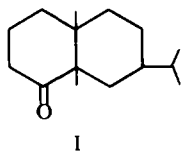


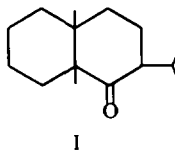
ERRATA

Chemical components of the roots of *Selinium Vaginatium*—I. Coumarins of the petroleum ether extract. T. R. SESHADRI, M. S. SOOD, K. L. HANDA and VISHAPPAUL, *Tetrahedron* **23**, 1883 (1967).

Read



for



The chemical shift—I. Long range effects of methyl groups and the anisotropies of the C—C and C—H bond. J. W. APSIMON, W. G. CRAIG, P. V. DEMARCO, D. W. MATHIESON, L. SAUNDERS and W. B. WHALLEY, *Tetrahedron* **23**, 2339 (1967).

The last equation on p. 2351 should read

$$k = \left(\frac{4lr}{R^2 + r^2 + 2lr} \right)^{\frac{1}{2}}$$

8-Amino-*p*-cymene from *p*-cymene-trichloramine-aluminum chloride-*t*-butyl halide. Synthetic and theoretical aspects. P. KOVACIC and R. J. HOPPER, *Tetrahedron* **23**, 3977 (1967).

p. 3977. The authors' names should read P. KOVACIC and R. J. HOPPER.

p. 984. The substances designated as 4,4'-Dimethyldiphenyliodonium iodide and tosylate may well contain some of the *ortho* isomers; see D. J. LE COUNT and J. A. W. REID, *J. Chem. Soc.*, 1298C (1967).